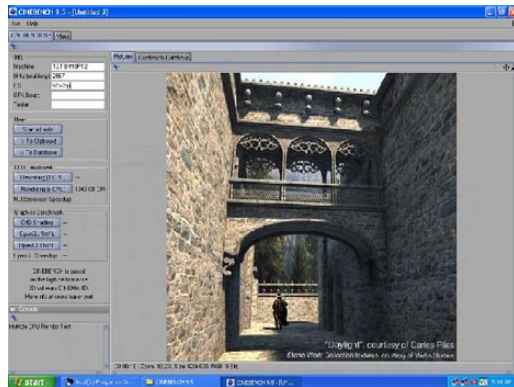


Bell Technologies' B410PT blade enclosure, an all-in-one self-contained unit is designed for applications requiring high density, low cost, low power consumption, and low maintenance. It is the perfect solution for HPC, rendering, and streaming applications, as well as a distributing server for web and application hosting. The B410PT with its pedestal ability provides the option to transform into a desk-side cluster or personal supercomputer. This solution is fully compatible and optimally designed for thermals required by Intel's Dual/Quad core Xeon 3000 series, Core 2 Duo, and Core 2 Quad products.



Features and Benefits

- Supports Intel S3000PT server boards
- Supports one 3.5" or two 2.5" Hard Disk per blade
- 10 system per each 4U chassis
- Includes fixed mounting slide rails
- Cinebench 1348CB-CPi with Core 2 Quad
- 1 blade draws 1 amp



Chassis Specification

1. EIA 310-D standard 4U chassis
2. Fully configured weighs approximately 120lbs
3. Dimension: 19"Wx7"Hx28"D
4. Corrosion-resistant Aluminum Alloy construction
5. Includes 10 Swappable blade carriers
6. Supports Intel S3000PT Board
7. PWM system fan control
8. Front Panel includes:

Buttons and Switches: Power on/off (momentary) button

LEDs: Power, Hard-Disk activity

Connectors: Two USB ports, One serial port
One video port, Two NIC

9. Supports one 3.5" or two 2.5" internal hard-disk drive

